



Republic of the Philippines
Department of Education
Region X - Northern Mindanao
DIVISION OF MALAYBALAY CITY

Sayre Highway Purok 6, Casisang, Malaybalay City

Telefax # 088-314-0094, E-mail add: www.depedmbaycity.com



2016-03-12
Deped-MALAYBALAY CITY DIVISION

RELEASED

Date: MAR 07 2016 Time: _____
By: [Signature]

DIVISION ADVISORY

TO: Chief Education Program Supervisor & Staff, Curriculum Implementation Division
Chief Education Program Supervisor & Staff, Schools Governance & Operations Division
Public Schools District Supervisors/District OIC's
Elementary and Secondary School Heads
Section/Unit Heads and Staff
All Others Concerned
This Division

FROM: *[Signature]*
EDILBERTO L. OPLENARIA, CESO VI
Schools Division Superintendent *[Signature]*

DATE: March 2, 2016

SUBJECT: Dissemination of CSC - Memorandum Circular 02, s. 2016 "Amendment to the Constant Factor in the Formula Used for Computing Terminal Leave Benefits (Section 40) and Computation of Leave Monetization (Section 24) of the Omnibus Rules on Leave"

1. For the information and guidance of all concerned, this Office hereby disseminates the herein Memorandum Circular 02, s. 2016 issued on January 12, 2016 by the Civil Service Commission declaring an amendment to the Constant Factor in the Formula Used for Computing Terminal Leave Benefits (Section 40) and Computation of Leave Monetization (Section 24) of the Omnibus Rules on Leave, content of which is self-explanatory.
2. For widest dissemination.

Encl:

As stated

Copy Furnished:

Records Unit
Personnel Unit

TO BE POSTED ON THE WEBSITE



MC No. 02, s. 2016

MEMORANDUM CIRCULAR

TO : ALL HEADS OF CONSTITUTIONAL BODIES; DEPARTMENTS, BUREAUS AND AGENCIES OF THE NATIONAL GOVERNMENT; LOCAL GOVERNMENT UNITS; GOVERNMENT-OWNED OR CONTROLLED CORPORATIONS WITH ORIGINAL CHARTERS; AND STATE UNIVERSITIES AND COLLEGES

SUBJECT : Amendment to the Constant Factor in the Formula Used for Computing Terminal Leave Benefits (Section 40) and Computation of Leave Monetization (Section 24) of the Omnibus Rules on Leave

Pursuant to CSC Resolution No. 1501530 dated December 21, 2015, the Commission, in view of the enactment of Republic Act No. 9849 which includes Eidul Adha and Eidul Fitr among the regular holidays now being observed in the Philippines, has resolved to change the constant factor used in computing the Terminal Leave Benefits (Section 40 of CSC Memorandum Circular No. 14, s. 1999) and Monetization of Leave Credits (Section 24 of the Omnibus Rules on Leave), as follows:

365 = Days in a year
104 = Saturdays & Sundays in a year
12 = Legal holidays in a year (in accordance with RA No. 9849)
12 = Months in a year

$$\frac{12}{365 - (104 + 12)} = \frac{12}{249} = .0481927$$

This Memorandum Circular shall take effect fifteen (15) days after the publication of CSC Resolution No. 1501530 in a newspaper of general circulation.

Ambala
ALICIA dela ROSA-BALA
Chairperson

12 JAN 2016

*CSC Resolution No. 1501530 dated December 21, 2015 was published on January 7, 2016 in Philippine Star

In a R. A. C. E. to Serve: Responsive, Accessible, Courteous and Effective Public Service



Amendment; Section 40 of CSC Memorandum Circular No. 14, s. 1999; Section 24 of the Omnibus Rules on Leave
Re: Constant Factor in the Formula for Computing Terminal Leave Benefits and Monetization of Leave Credits
X ----- X

Number : 1501530

Promulgated : 21 DEC 2015

RESOLUTION

WHEREAS, Section 12 (2), Chapter 3, Subtitle A, Title I, Book V of Executive Order No. 292 or the Administrative Code of 1987 conferred on the Civil Service Commission the power and function to "prescribe, amend and enforce rules and regulations for carrying into effect the provisions of the Civil Service Law and other pertinent laws";

WHEREAS, Section 40 of CSC Memorandum Circular No. 14, s. 1999 provides for the constant factor to be used in the formula for computing terminal leave, to wit:

"Section 40. Computation of terminal leave

X X X

"The constant factor was derived from this formula:

365 = Days in a year
104 = Saturdays & Sundays in a year
10 = Legal holidays in a year (provided by EO 292)
12 = Months in a year

$$\frac{12}{365 - (104 + 10)} = \frac{12}{251} = .0478087$$

"This formula shall take effect on January 15, 1999."

WHEREAS, the number of legal holidays in a year in the above constant factor is ten (10) days as provided under Executive Order No. 292;

Certified True Copy:
SEYMOUR R. FAJARES
Chief Personnel Specialist
Commission Secretariat & Liaison Office

In a R. A. C. E. to Serve: Responsive, Accessible, Courteous and Effective Public Service

WHEREAS, Section 24 of the Omnibus Rules on Leave likewise provides for the same constant factor (.0478087) in the computation of leave monetization;

WHEREAS, the Department of Budget and Management issued Budget Circular No. 2002-1 dated January 14, 2002 to prescribe the guidelines on the computation and funding of the Terminal Leave Benefits and Monetization of Leave Credits in conformity with CSC Memorandum Circular No. 14, s. 1999;

WHEREAS, Republic Act No. 9849 (An Act Declaring the 10th Day of Zhul Hijja, the 12th Month of the Islamic Calendar, A National Holiday for the Observance of Eidul Adha, Further Amending For The Purpose Section 26 Chapter 7 Book I of Executive Order No. 292, Otherwise Known as the Administrative Code of 1987, as Amended) includes Eidul Adha and Eidul Fitr among the regular holidays being observed in the Philippines;

WHEREAS, with the enactment of RA No. 9849, the number of legal holidays now being observed in the country is twelve (12) days in a year;

WHEREAS, there is a need to change the number of legal holidays in deriving the constant factor to be used in the formula for computing the Terminal Leave Benefits and Monetization of Leave Credits, as follows:

365 = Days in a year
104 = Saturdays & Sundays in a year
12 = Legal holidays in a year (in accordance with RA No. 9849)
12 = Months in a year

$$\frac{12}{365 - (104 + 12)} = \frac{12}{249} = .0481927$$

WHEREFORE, in view of the foregoing, the Commission **RESOLVES** to change the constant factor used in computing the Terminal Leave Benefits (Section 40 of CSC Memorandum Circular No. 14, s. 1999) and Monetization of Leave Credits (Section 24 of the Omnibus Rules on Leave) from .0478087 to .0481927.

All rules, regulations and issuances which are inconsistent herewith are hereby repealed, amended or modified accordingly.

Certified True Copy

SEYMOUR R. FAJARES
Chief Personnel Specialist
Commission Secretariat & Liaison Office

This amendment shall take effect fifteen (15) days from the date of its publication.


Quezon City.


ALICIA dela ROSA-BALA
Chairperson

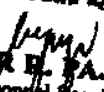

ROBERT S. MARTINEZ
Commissioner


NIEVES L. OSORIO
Commissioner

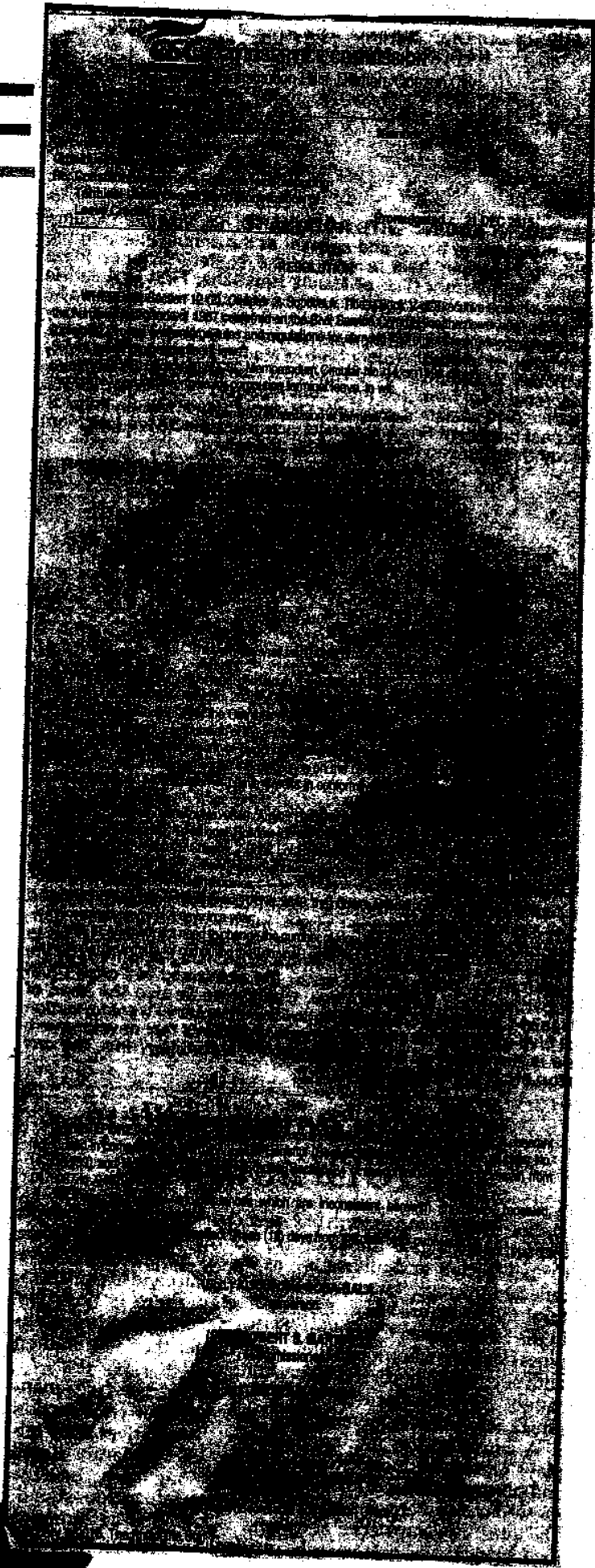
Attested by:


DOLORES B. BONIFACIO
Director IV
Commission Secretariat and Liaison Office

HPSO/PSSD/APE/JLT/DOLM/ane
Constant factor_computation of TLB and MLC


SEYMOUR E. FAJARES
Chief Personnel Specialist
Commission Secretariat & Liaison Office

NE



Date: Jan. 07, 2016

Publication: Phil. Star

Page: B9

"PAID AD"