



**Republic of the Philippines**  
**Department of Education**  
**REGION X- NORTHERN MINDANAO**  
**DIVISION OF MALAYBALAY CITY**

DM 2020-07-259  
 DEPED MALAYBALAY CITY DIVISION  
 RELEASED  
 DATE: 02 2020 TIME: 11:47  
 BY: glaw

**Division MEMORANDUM**

No. 259 \_\_\_\_\_, s. 2020

**TO:** Assistant Schools Division Superintendent  
 Chief Education Supervisor, SGOD and CID  
 Public Elementary and Secondary School Heads  
 All Others concerned

**FROM:** **VICTORIA V. GAZO, PhD, CESO V**  
 Schools Division Superintendent

**DATE:** June 30, 2020

**SUBJECT: STANDARD AND IMPROVED DESIGNS OF HAND WASHING FACILITIES AND SPECIFICATIONS FOR SCHOOL SITE IMPLEMENTATION.**

1. This Office disseminates the herein proposed handwashing facilities standard and improvised designs to be adopted in school sites for implementation.
2. The schools shall receive soft copies of program of works upon request and shall coordinate the Division Engineer through email address at [leslie.fontanilla@deped.gov.ph](mailto:leslie.fontanilla@deped.gov.ph).
3. Refers to the OUA Memo 00-0520-009 dated 05 May 2020 with priority list of schools the Division Engineer shall determine repair works of existing handwashing facilities where replacements and improvements are necessary.
4. Queries relative to this can be relayed to Engr. Leslie T. Fontanilla, Division Engineer at 0917 712 5393.

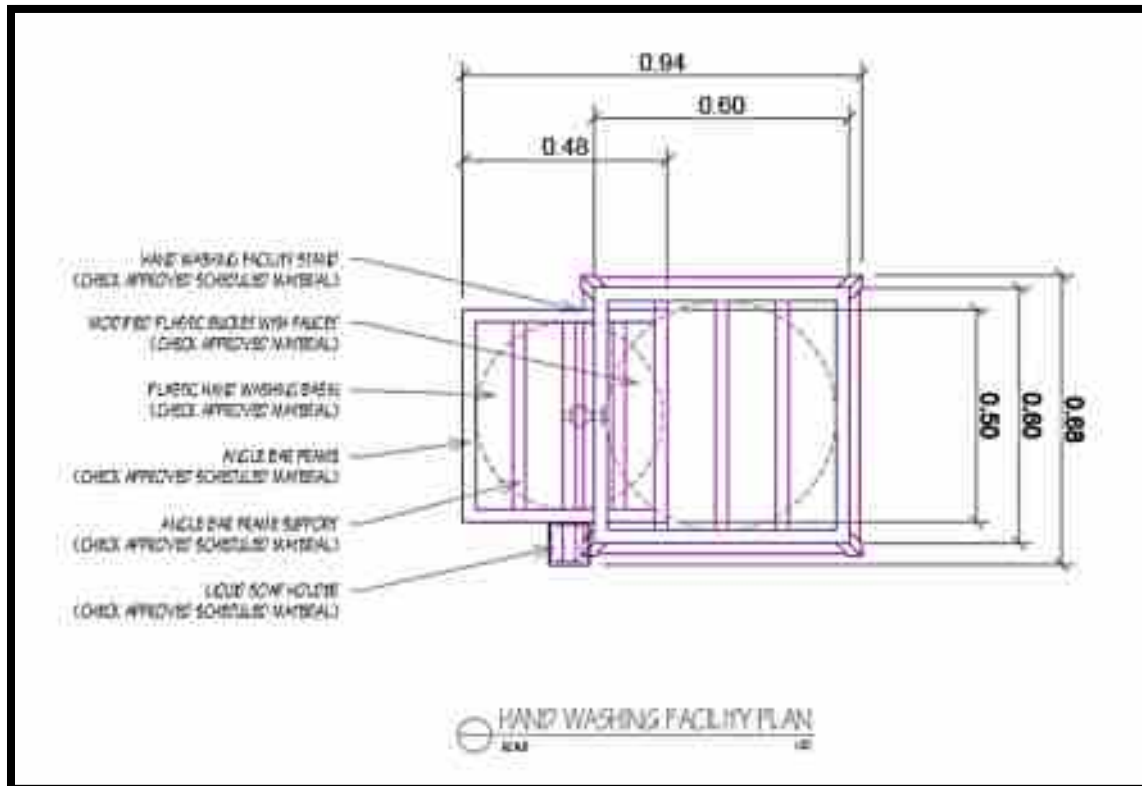
Encl.: As stated

Copy Furnished: Records Unit  
 Education Facilities Section



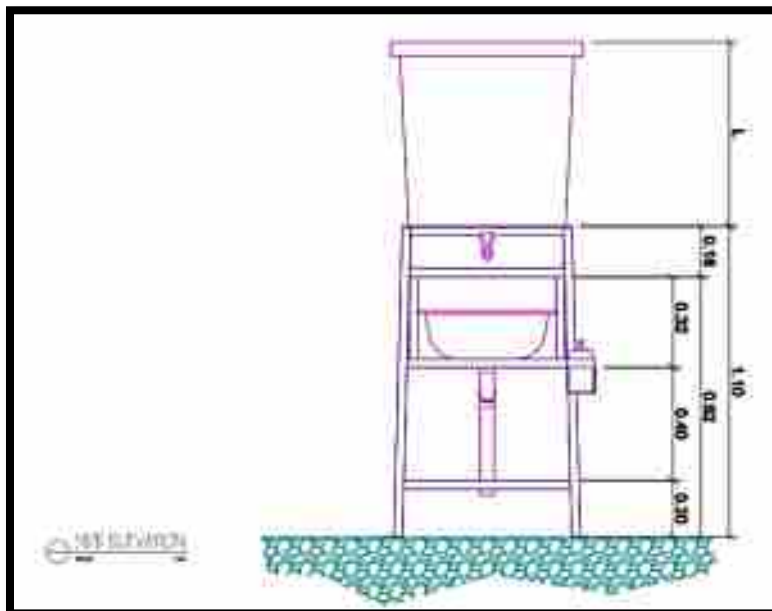
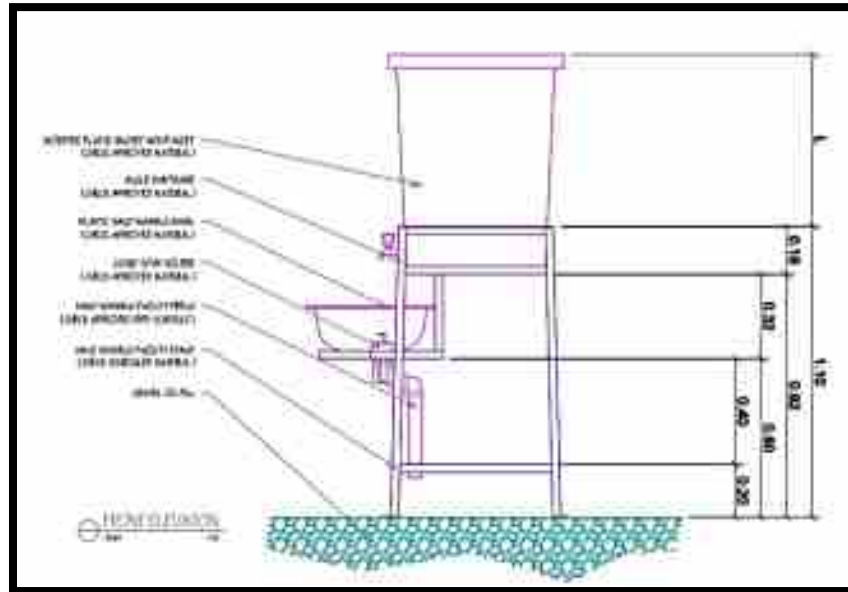
Republic of the Philippines  
**Department of Education**  
REGION X- NORTHERN MINDANAO  
DIVISION OF MALAYBALAY CITY

**Single Hand Washing Facility**





Republic of the Philippines  
**Department of Education**  
REGION X- NORTHERN MINDANAO  
DIVISION OF MALAYBALAY CITY







Republic of the Philippines  
**Department of Education**  
REGION X- NORTHERN MINDANAO  
DIVISION OF MALAYBALAY CITY

---

**DepED Option 1 Hand Washing Facilities**

## Option 1 – Variant A



## Option 1 – Variant B





Republic of the Philippines  
**Department of Education**  
REGION X- NORTHERN MINDANAO  
DIVISION OF MALAYBALAY CITY

---

**DepED Option 1 Hand Washing Facilities**

## Option 1 – Variant C

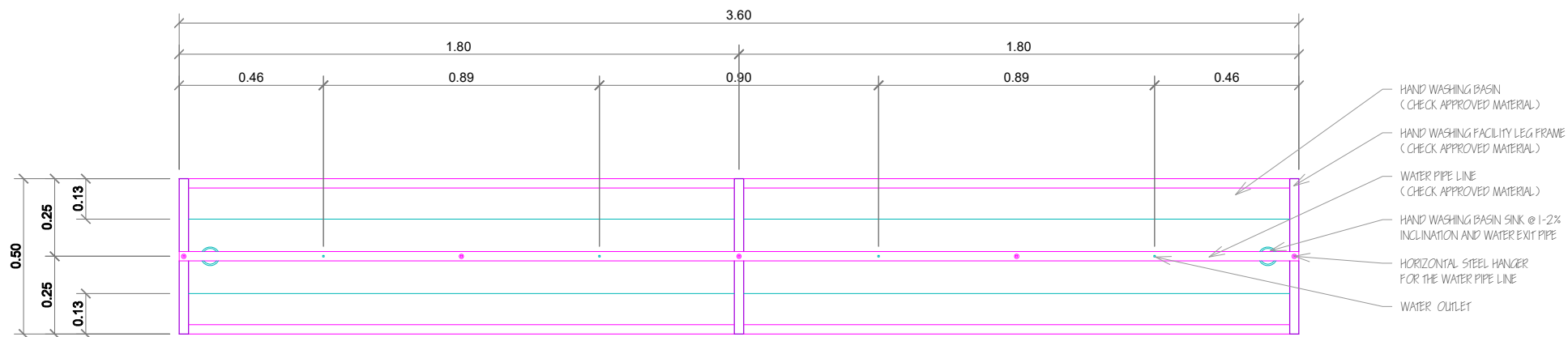


## Option 1 – Variant D







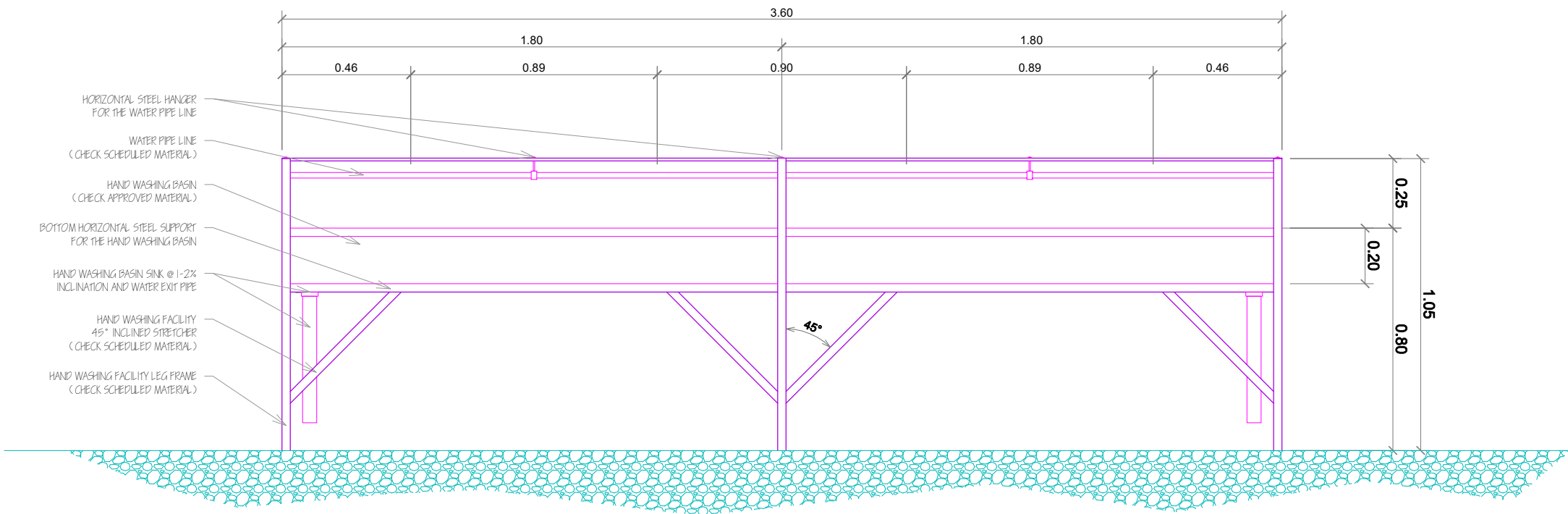




 **HAND WASHING FACILITY PLAN**  
SCALE 1:15



		PREPARED BY:  <b>VERGILLER MISA GOMEZ, UAP</b> <small>ARCHITECT</small>	CHECKED BY:  <b>LESLIE T. PONTANILLA, CE</b> <small>DIVISION ENGINEER</small>	RECOMMENDING APPROVAL:  <b>LORENZO O. CAPACIO, Ed.D.</b> <small>CHIEF, GOVERNANCE</small>	APPROVED BY:  <b>VICTORIA V. GAZO, Ph.D., CESO V</b> <small>SCHOOLS DIVISION SUPERINTENDENT</small>	PROJECT TITLE:  <b>HAND WASHING FACILITY (MIN. 4 - MAX. 8 STUDENT CAPACITY)</b>  <small>PUROK 6, CABISANG, MALAYBALAY CITY, BUKIDNON</small>	PROJECT NO.: DESIGNED BY: ENCLOSED BY: CHECKED BY: DATE:	OWNER:  <b>DEPARTMENT OF EDUCATION</b>  SHEET CONTENT:  PLAN	SHEET NO.:  <b>1</b>  <b>4</b>
--	---	--	--	--	--	--	--	--	--

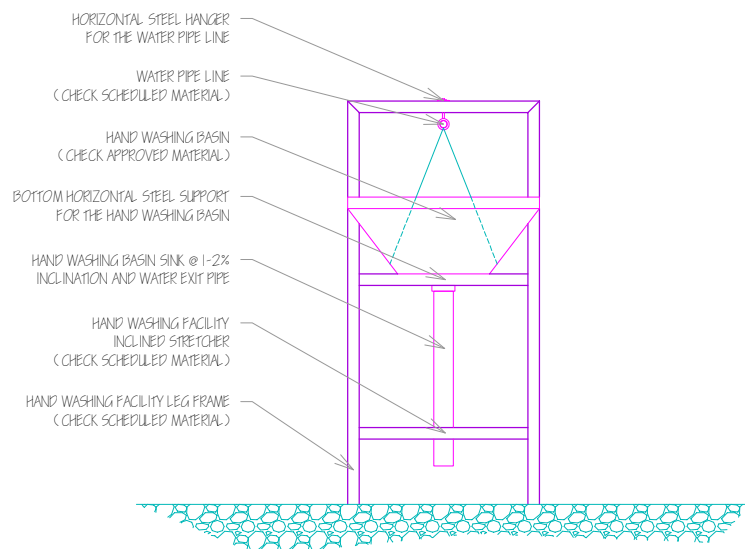




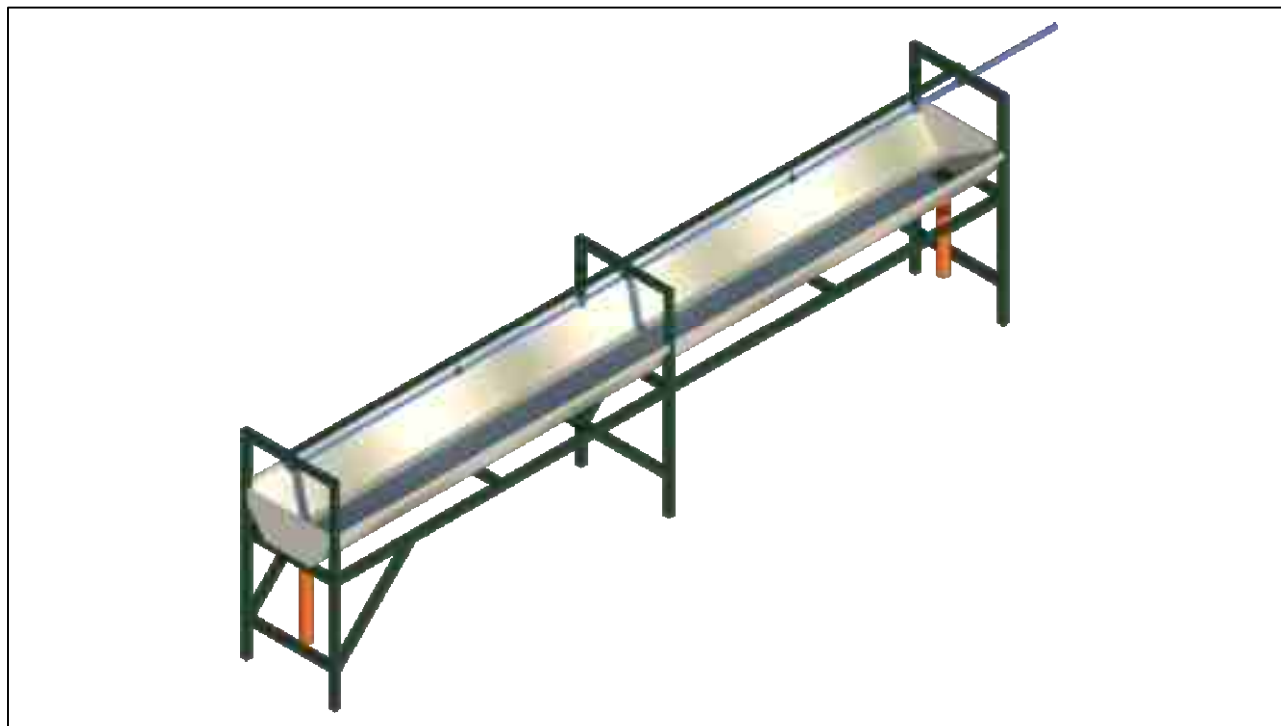
FRONT ELEVATION

SCALE 1:15



		PREPARED BY: <b>VERGILLER MISA GOMEZ, UAP</b> ARCHITECT	CHECKED BY: <b>LESLIE T. PONTANILLA, CE</b> DIVISION ENGINEER	RECOMMENDING APPROVAL: <b>LORENZO O. CAPACIO, Ed.D.</b> CHIEF, GOVERNANCE	APPROVED BY: <b>VICTORIA V. GAZO, Ph.D., CESO V</b> SCHOOLS DIVISION SUPERINTENDENT	PROJECT TITLE: <b>HAND WASHING FACILITY (MIN. 4 - MAX. 8 STUDENT CAPACITY)</b> PUROK 6, CABISANG, MALAYBALAY CITY, BUKIDNON	PROJECT NO.: DESIGNED BY: ENCLOSED BY: CHECKED BY: DATE:	OWNER: <b>DEPARTMENT OF EDUCATION</b> SHEET CONTENT: ELEVATION	SHEET NO.: <div>2</div> <div>4</div>
--	---	---	---	---	---	---	--	---	---



SIDE ELEVATION  
SCALE 1:10



ISOMETRIC VIEW  
SCALE NPTS

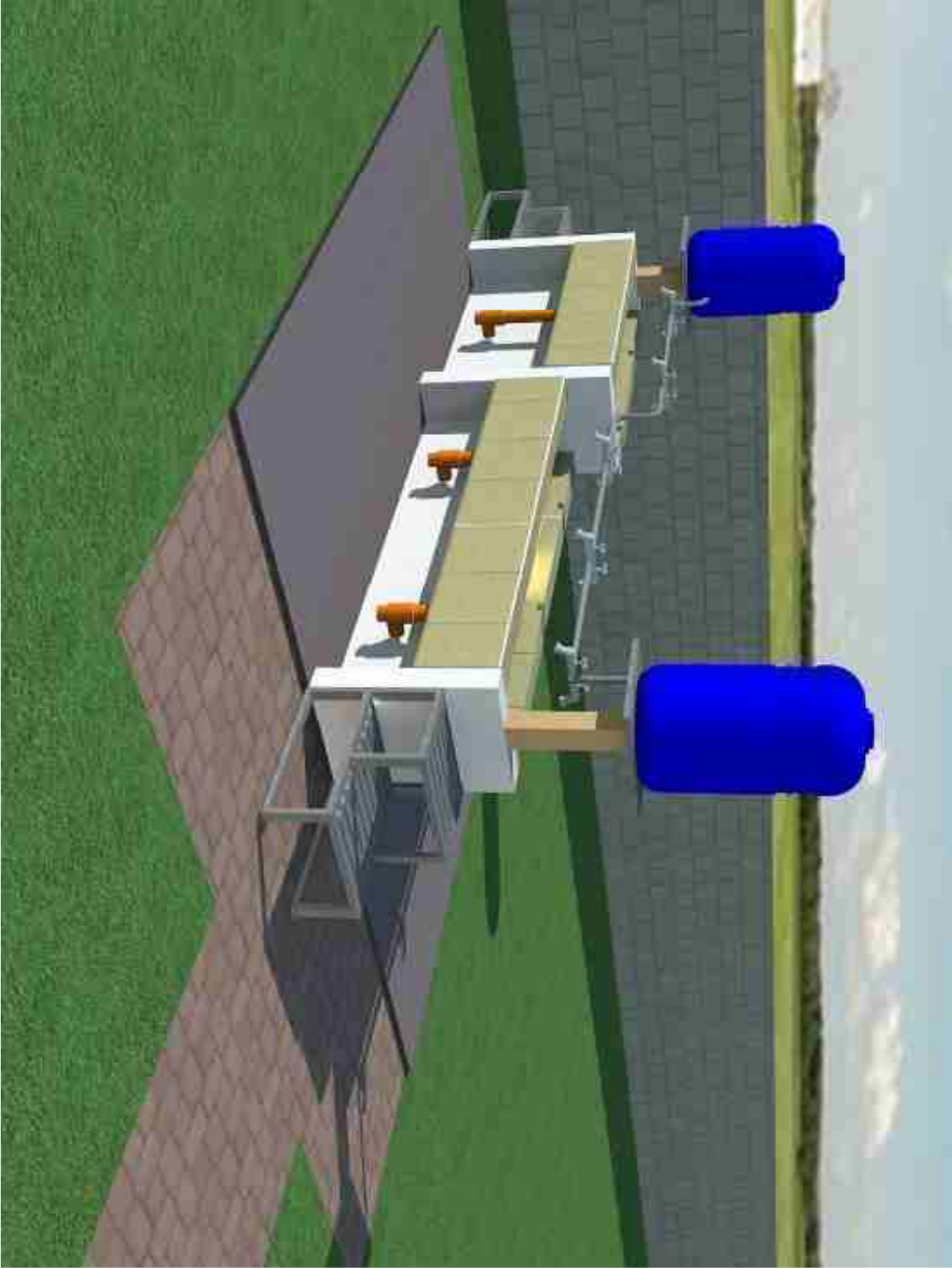
		PREPARED BY:  <b>VERGILLER MISA GOMEZ, UAP</b> <small>ARCHITECT</small>	CHECKED BY:  <b>LESLIE T. FONTANILLA, CE</b> <small>DIVISION ENGINEER</small>	RECOMMENDING APPROVAL:  <b>LORENZO O. CAPACIO, Ed.D.</b> <small>CHIEF, GOVERNANCE</small>	APPROVED BY:  <b>VICTORIA V. GAZO, Ph.D., CESO V</b> <small>SCHOOLS DIVISION SUPERINTENDENT</small>	PROJECT TITLE:  <b>HAND WASHING FACILITY (MIN. 4 - MAX. 8 STUDENT CAPACITY)</b>  <small>PUROK 6, CABISANG, MALAYBALAY CITY, BUKIDNON</small>	PROJECT NO.: DESIGNED BY: ENCLOSED BY: CHECKED BY: DATE:	OWNER:  <b>DEPARTMENT OF EDUCATION</b>  SHEET CONTENT:  ELEVATION, ISOMETRIC DRAWING	SHEET NO.:  <div style="border: 1px solid black; border-radius: 50%; width: 40px; height: 40px; display: flex; align-items: center; justify-content: center; margin: 0 auto;"> <div style="text-align: center;">3</div> <div style="text-align: center;">4</div> </div>
--	---	--	--	--	--	--	--	--	---

# **HANDWASHING**

## **PLAIN CEMENT PAINTED FINISH**

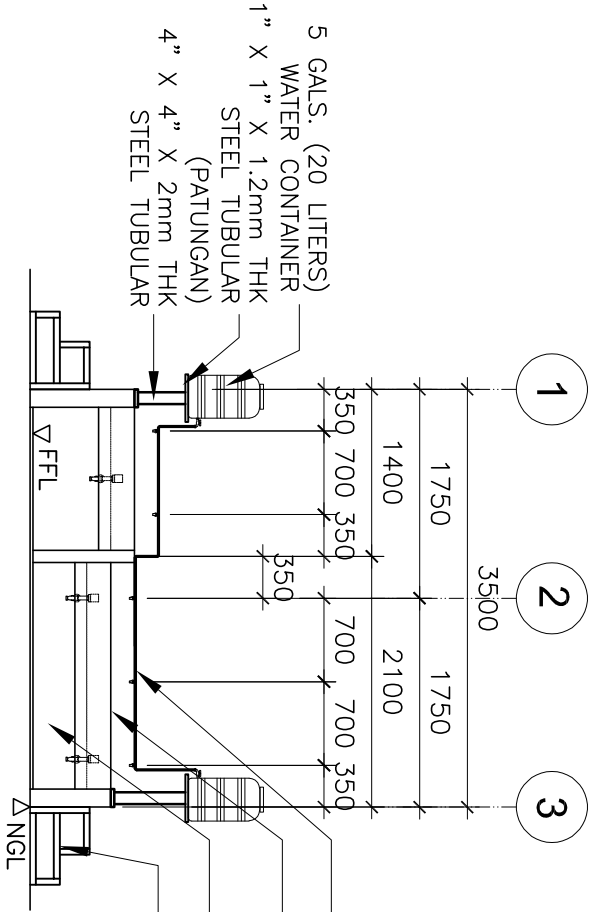
### **(OPTION 2: VARIANT A)**

#### **FOR ELEMENTARY**



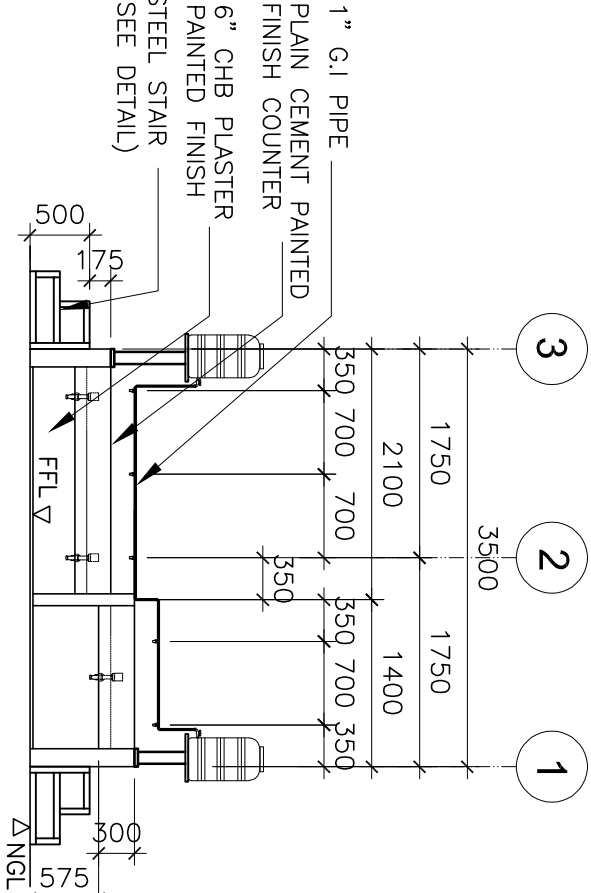
1 PERSPECTIVE  
A-1 N T S

REPUBLIC OF THE PHILIPPINES <b>DepEd</b> DEPARTMENT OF EDUCATION EDUCATION FACILITIES DIVISION MIRALDO AVENUE, PASIG CITY		DRAWN BY :  JUNELSON P. CULLADO CDD OPERATOR EPD-DepEd		ARCHITECT :  JET RAYMOND G. ALABASO ARCHITECT III EPD-DepEd		RECOMMENDING APPROVAL :  LUIS G. PURISIMA, JR. ASST. CHIEF, EPD-AS DepEd		RECOMMENDING APPROVAL :  ANNABELLE R. PANGAN CHIEF OFFICE OF THE CHIEF, EPD-AS		APPROVED BY :  ALAN DEL B. PASCUA UNDERSECRETARY FOR ADMINISTRATION		PROJECT TITLE :  HANDWASHING PLAIN CEMENT PAINTED FINISH (OPTION 2: VARIANT A) FOR ELEMENTARY  LOCATION :		PROJECT CODE:		OWNER :  DEPARTMENT OF EDUCATION DepEd		SHEET NO:  A-1 3	
---	--	--	--	---	--	--	--	--	--	--	--	--	--	---------------	--	---	--	---------------------------	--



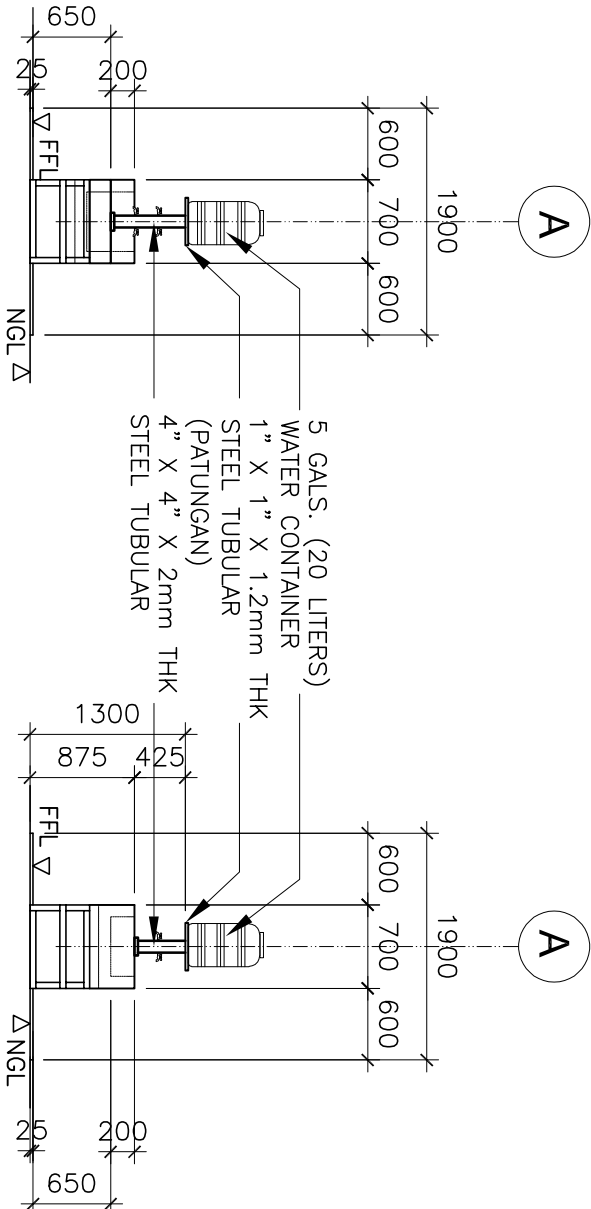
## 2 FRONT ELEVATION

SCALE: 1:100M



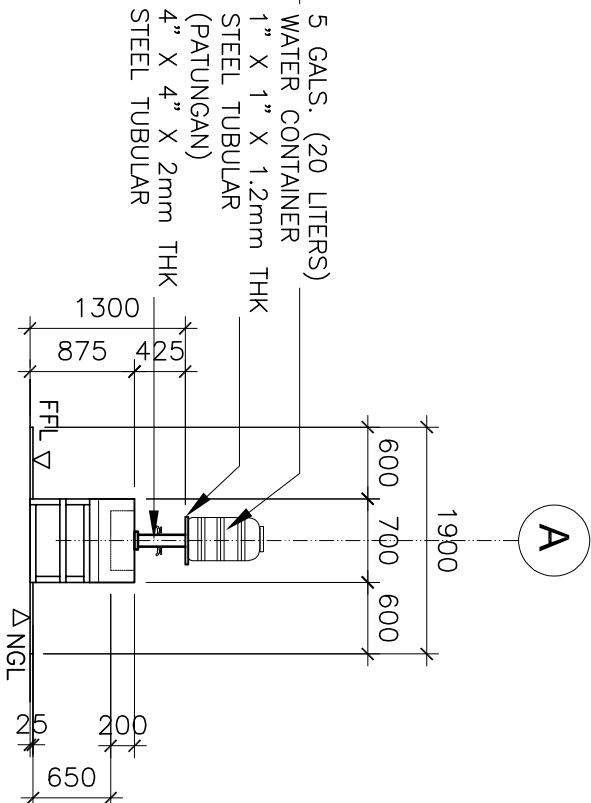
## 3 REAR ELEVATION

SCALE: 1:100M



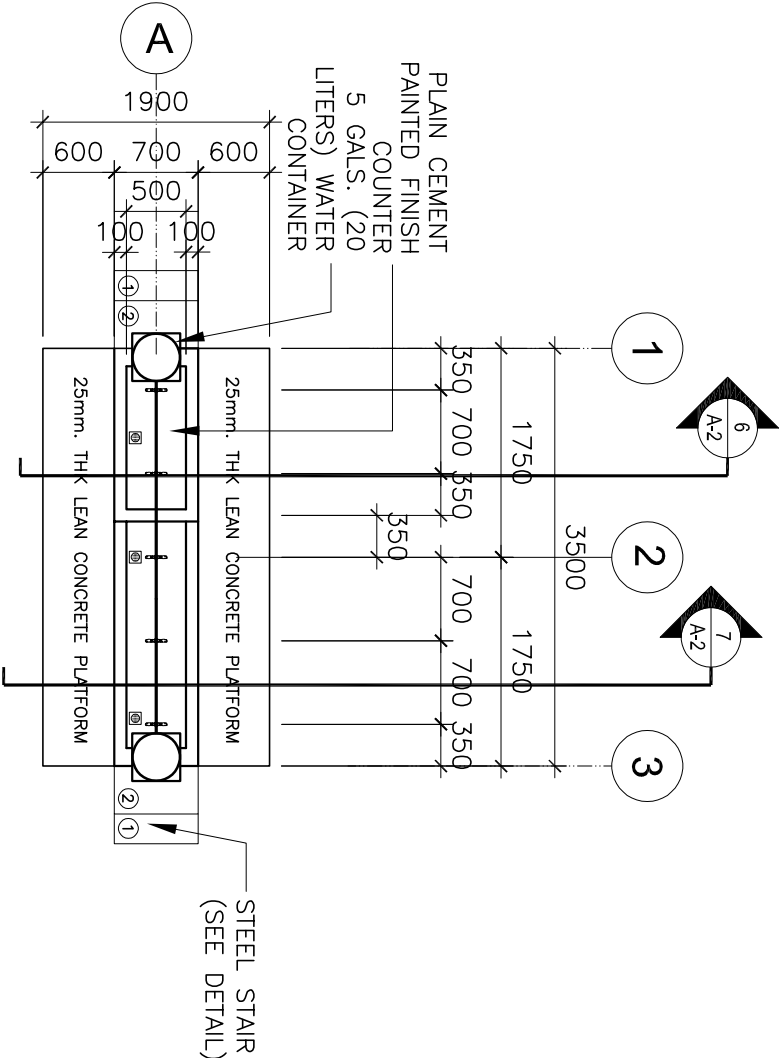
## 4 RIGHT SIDE ELEVATION

SCALE: 1:100M



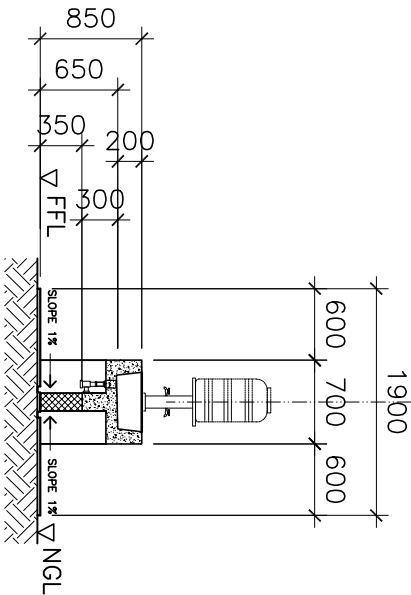
## 5 LEFT SIDE ELEVATION

SCALE: 1:100M



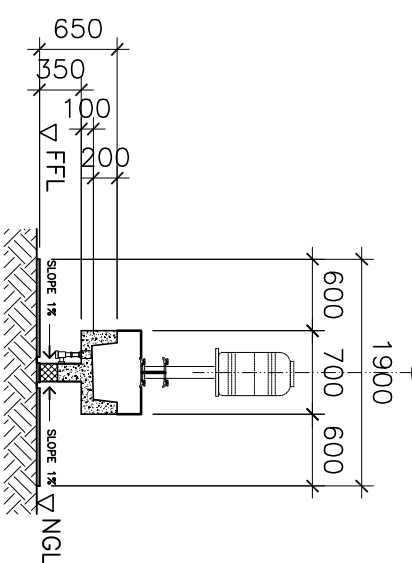
## 1 FLOOR PLAN

SCALE: 1:100M



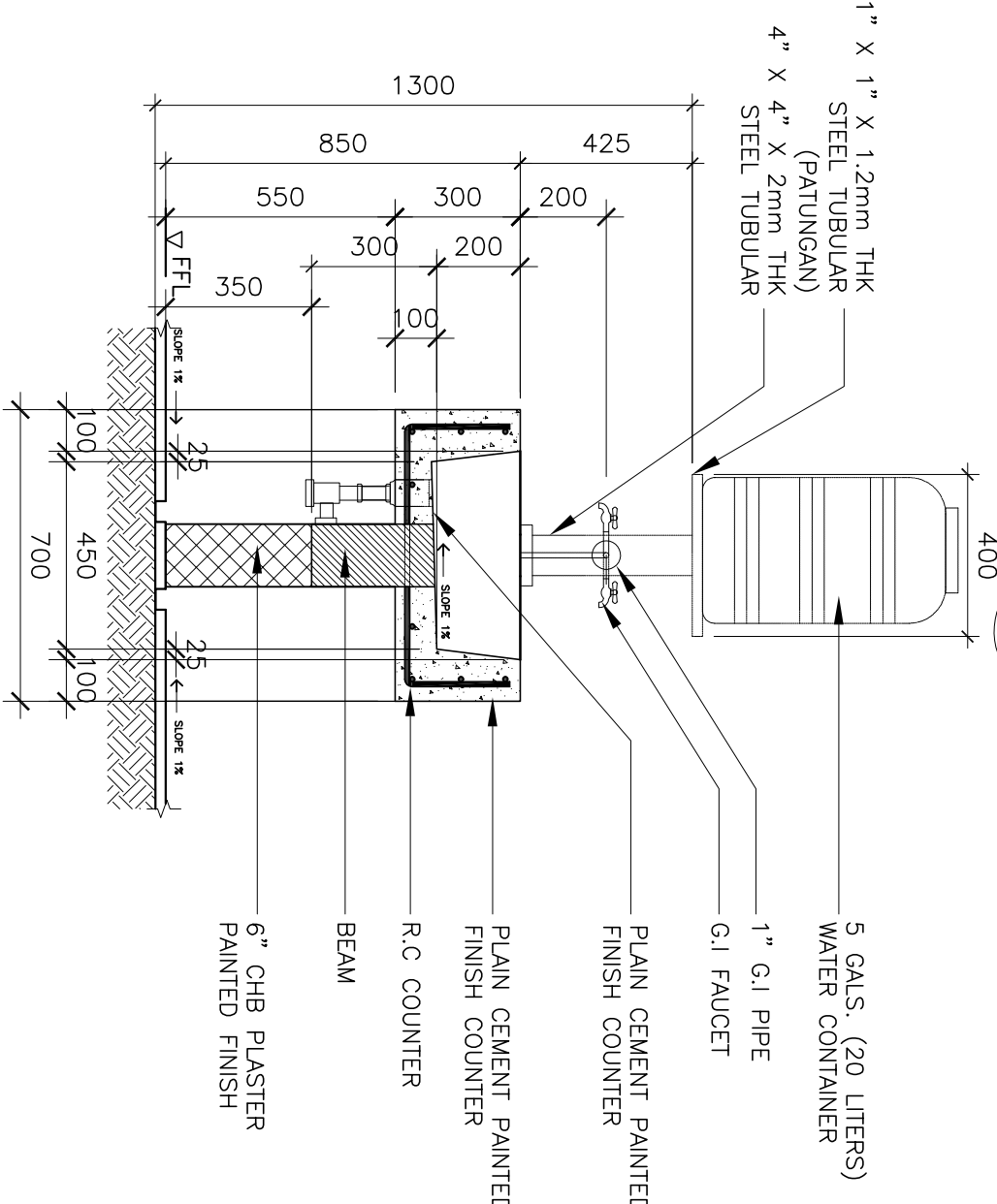
## 6 CROSS SECTION 1

SCALE: 1:100M



## 7 CROSS SECTION 2

SCALE: 1:100M



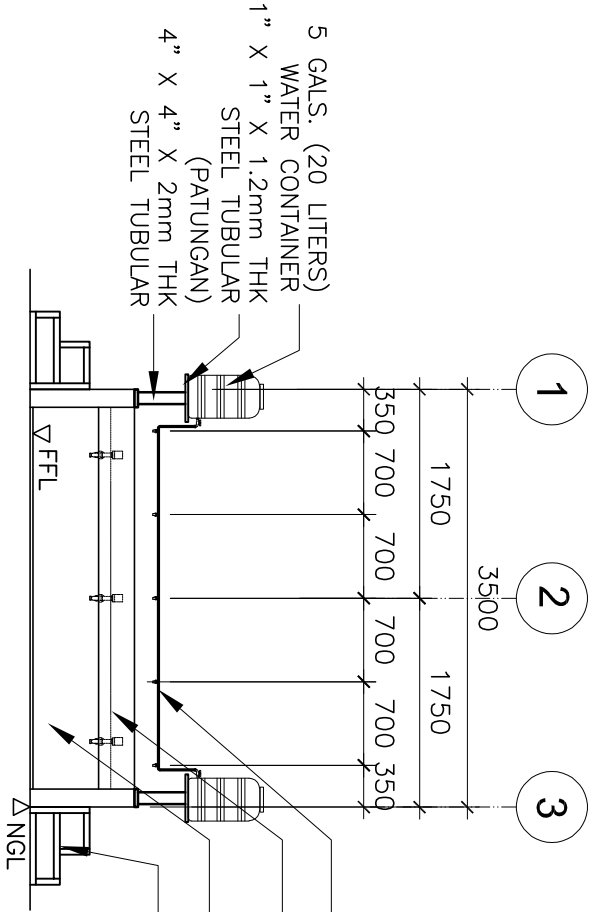
## 8 HANDWASHING COUNTER DETAIL

SCALE: 1:100M

**HANDWASHING  
PLAIN CEMENT PAINTED FINISH  
(OPTION 2: VARIANT B)  
FOR SECONDARY**

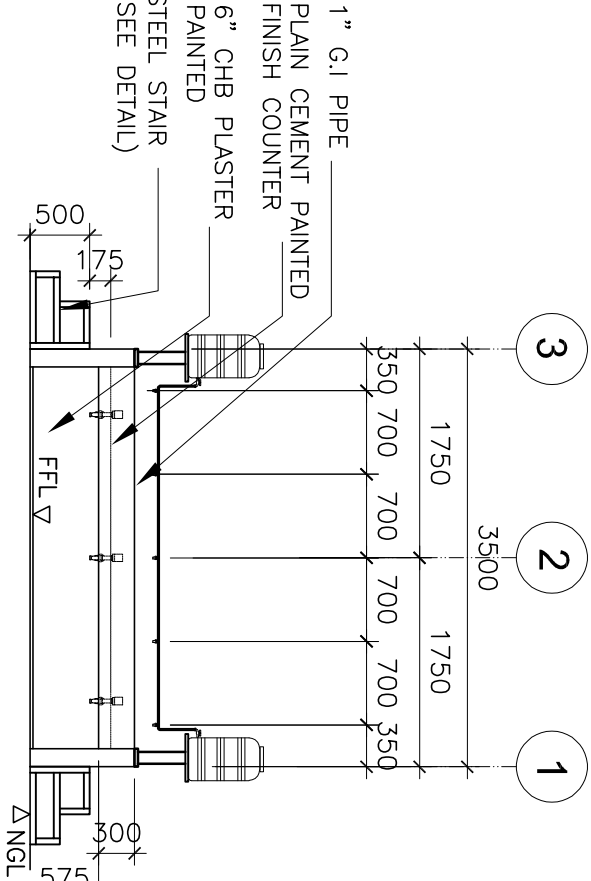






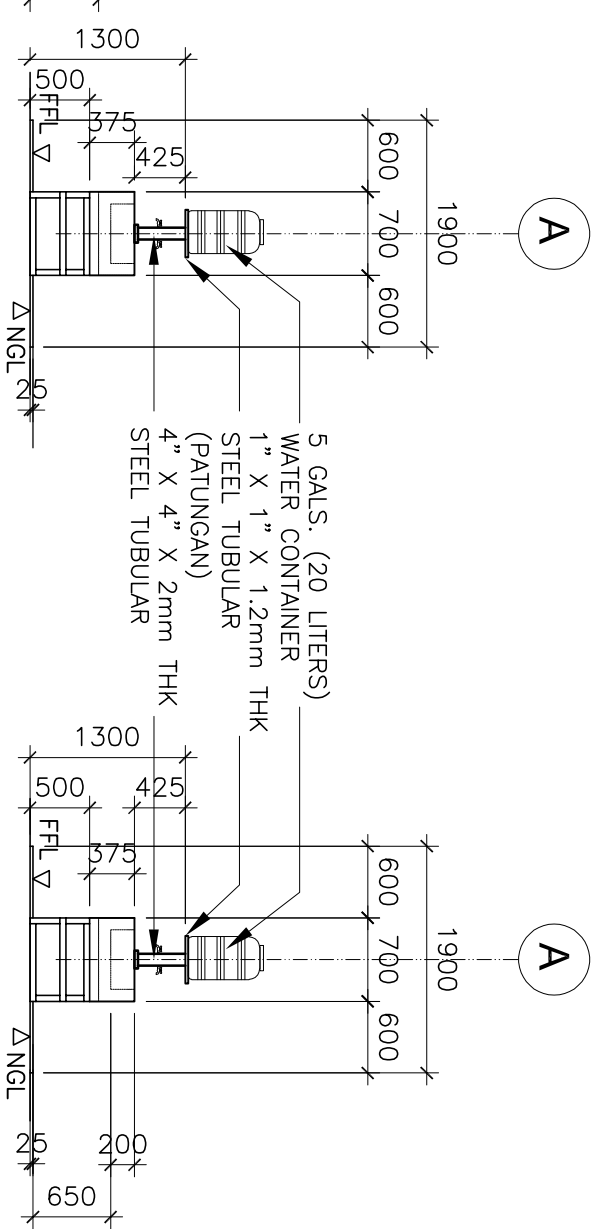
2 FRONT ELEVATION

SCALE: 1:100M



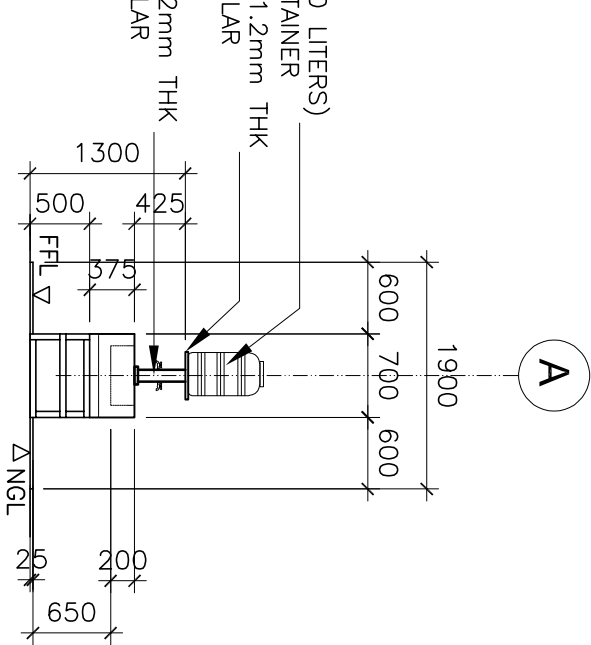
3 REAR ELEVATION

SCALE: 1:100M



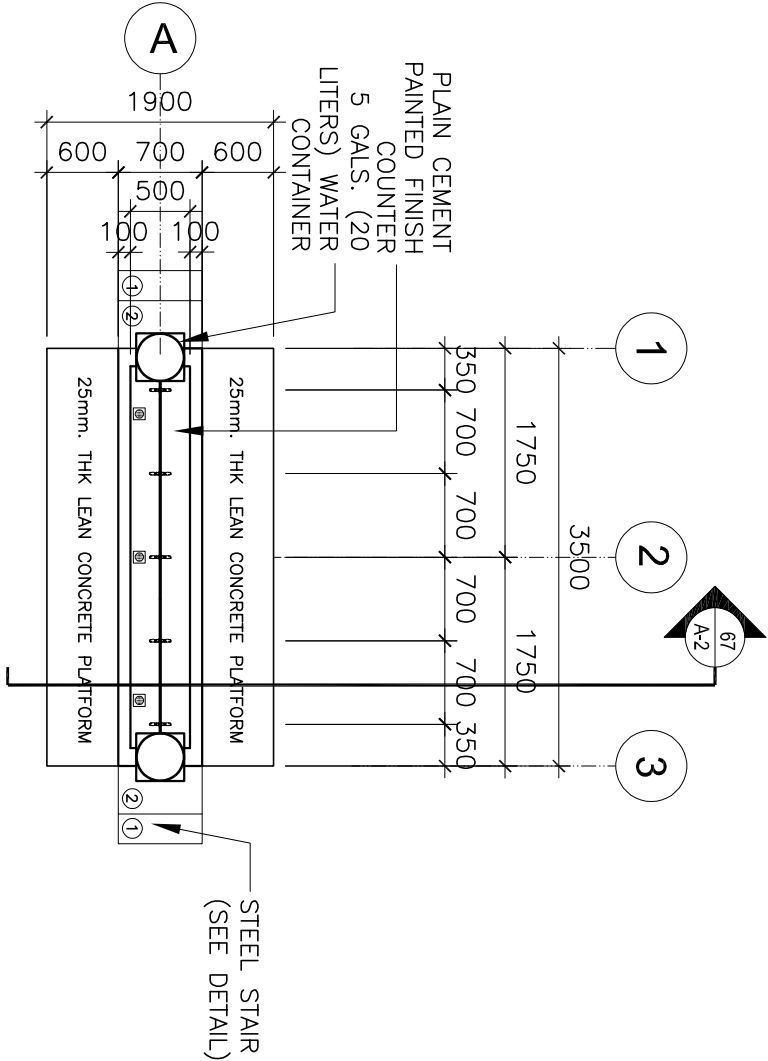
4 RIGHT SIDE ELEVATION

SCALE: 1:100M



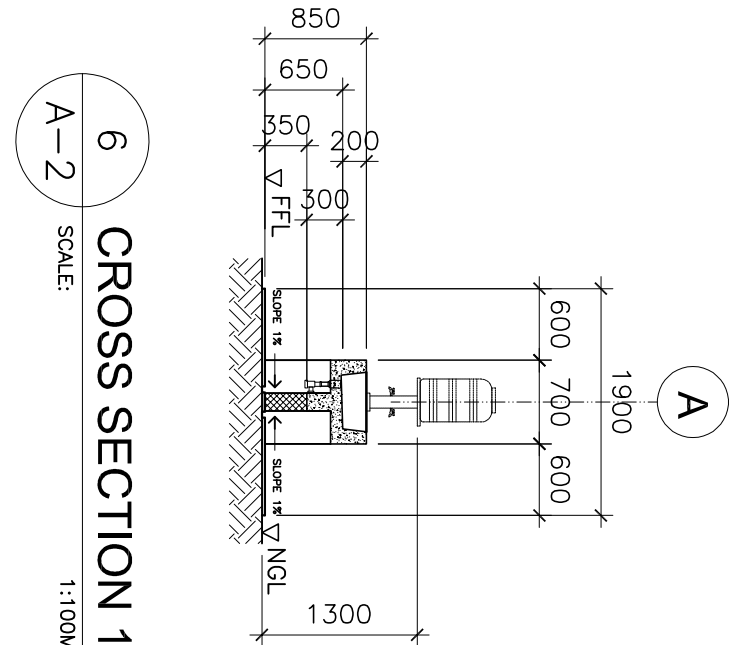
5 LEFT SIDE ELEVATION

SCALE: 1:100M



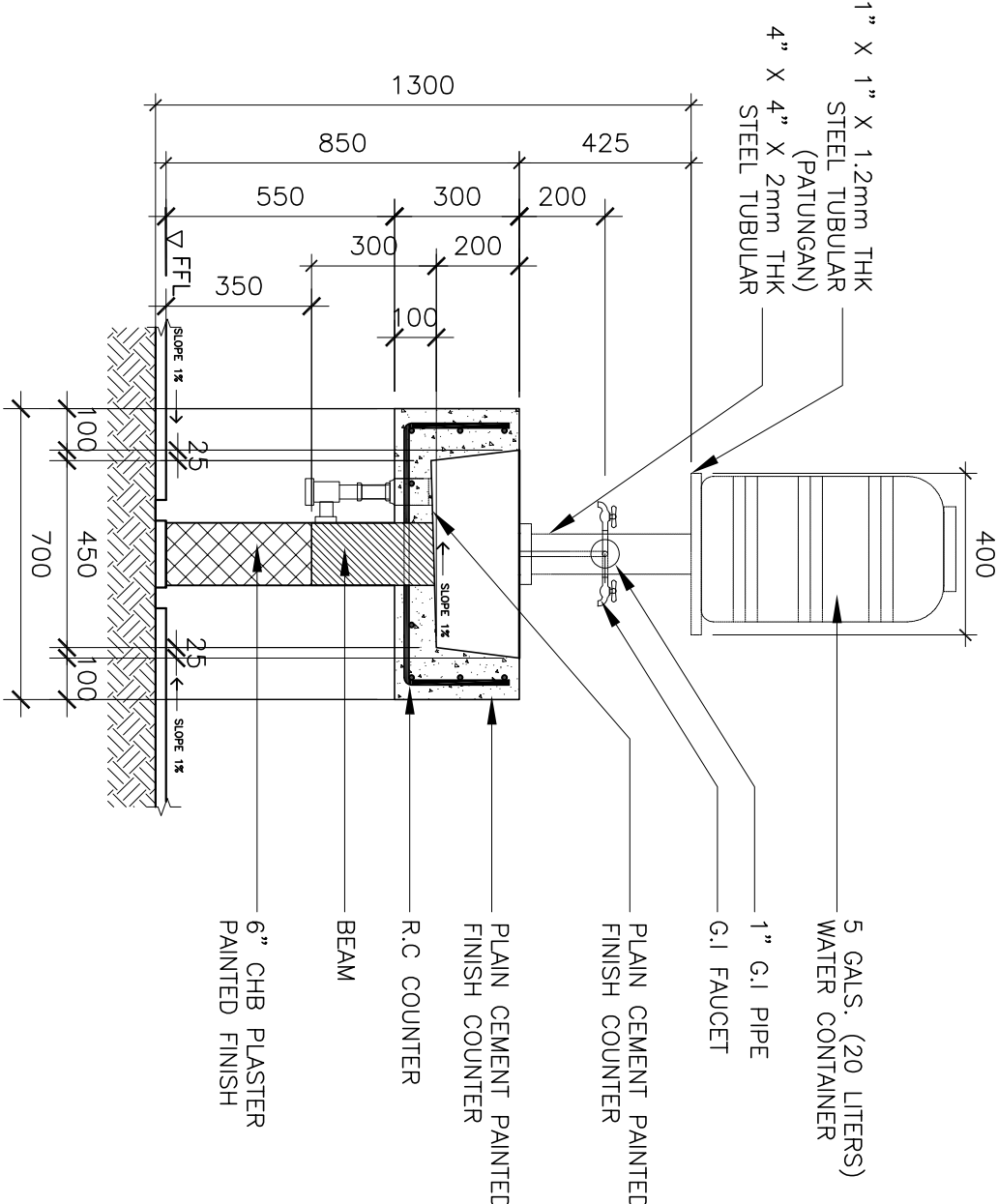
1 FLOOR PLAN

SCALE: 1:100M



6 CROSS SECTION 1

SCALE: 1:100M



7 HANDWASHING COUNTER DETAIL

SCALE: N.T.S

REPUBLIC OF THE PHILIPPINES DepEd DEPARTMENT OF EDUCATION EDUCATION FACILITIES DIVISION MIRALDO AVENUE, PASIG CITY		DRAWN BY : JUNELSON P. CULADO CDD OPERATOR ETD-DepEd	ARCHITECT : JET RAYMOND G. ALABASO ARCHITECT III ETD-DepEd	RECOMMENDING APPROVAL : LUIS G. PURISIMA, JR. ASST. CHIEF, ETD-AS DepEd	RECOMMENDING APPROVAL : ANNABELLE R. PANGAN CHIEF OFFICE OF THE CHIEF, ETD-AS	APPROVED BY : ALAN DEL B. PASCUA UNDERSECRETARY FOR ADMINISTRATION	PROJECT TITLE : HANDWASHING PLAIN CEMENT PAINTED FINISH (OPTION 2: VARIANT B) FOR SECONDARY		PROJECT CODE:	OWNER : DEPARTMENT OF EDUCATION DepEd		SHEET NO.: A-2 3
				PROJECT CONTENTS : - FRONT & REAR ELEVATION - LEFT & RIGHT ELEVATION - FLOOR PLAN								

# **HANDWASHING**

## **PLAIN CEMENT PAINTED FINISH**

### **(OPTION 2: VARIANT C)**

#### **FOR ELEMENTARY**

LINE & GRADE

ARCHITECTURAL

STRUCTURAL

SANITARY

ELECTRICAL

MECHANICAL



1

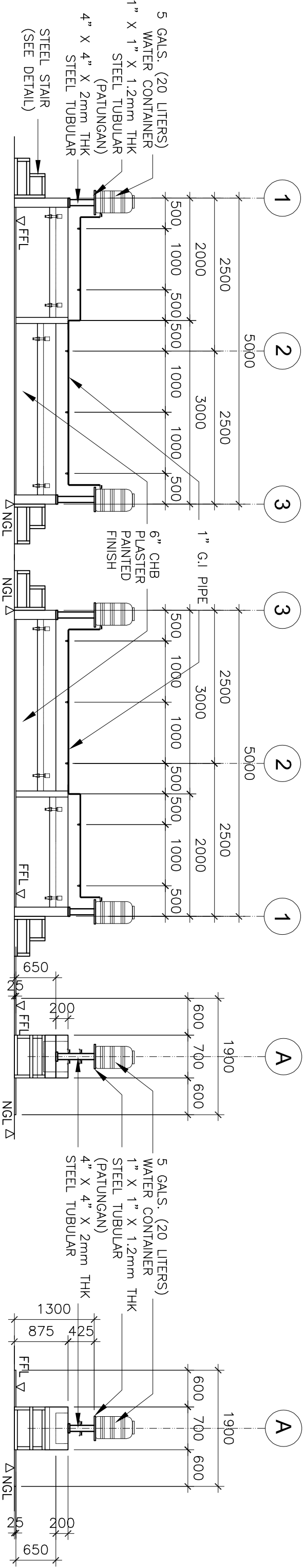
PERSPECTIVE

A-1

N T S

<div>REPUBLIC OF THE PHILIPPINES</div> <div><div><div><div><div></div><div>DepEd</div><div>DEPARTMENT OF EDUCATION</div><div>EDUCATION FACILITIES DIVISION</div><div>MIRALDO AVENUE, PASIG CITY</div></div></div></div></div>		DRAWN BY : <div><div></div><div>JUNELSON P. CULLADO</div><div>OLD OPERATOR</div><div>EPD-DepEd</div></div>		ARCHITECT : <div><div></div><div>JET RAYMOND G. ALABASO</div><div>ARCHITECT III</div><div>EPD-DepEd</div></div>		RECOMMENDING APPROVAL : <div><div></div><div>LUIS G. PURISIMA, JR.</div><div>ASST. CHIEF, EPD-AS</div><div>DepEd</div></div>		RECOMMENDING APPROVAL : <div><div></div><div>ANNABELLE R. PANGAN</div><div>CHIEF</div><div>OFFICE OF THE CHIEF, EPD-AS</div></div>		APPROVED BY : <div><div></div><div>ALAN DEL B. PASCUA</div><div>UNDERSECRETARY FOR ADMINISTRATION</div></div>		PROJECT TITLE : <div>HANDWASHING</div> <div>PLAIN CEMENT PAINTED FINISH</div> <div>(OPTION 2: VARIANT C)</div> <div>FOR ELEMENTARY</div> <div>LOCATION :</div>		PROJECT CODE:		OWNER : <div>DEPARTMENT OF EDUCATION</div> <div>DepEd</div> <div>SHEET COMMENTS : - PERSPECTIVE</div>		SHEET NO: <div>A-1</div> <div>3</div>	
---	--	--	--	---	--	--	--	--	--	---	--	--	--	---------------	--	---	--	---------------------------------------	--



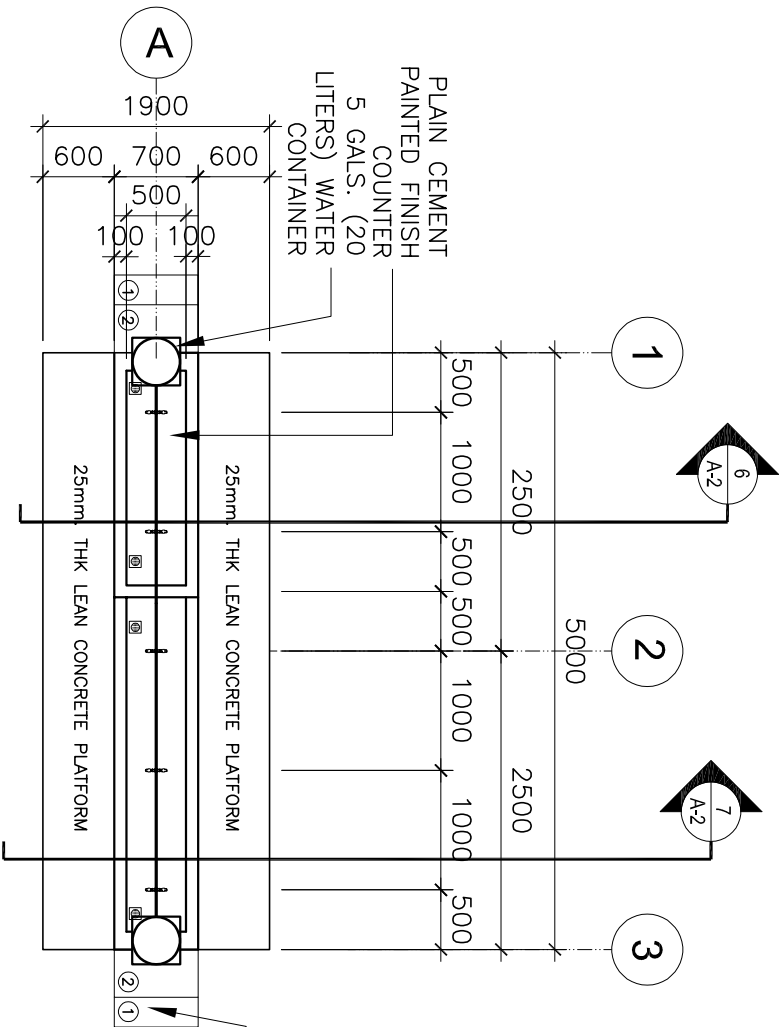


## 2 FRONT ELEVATION

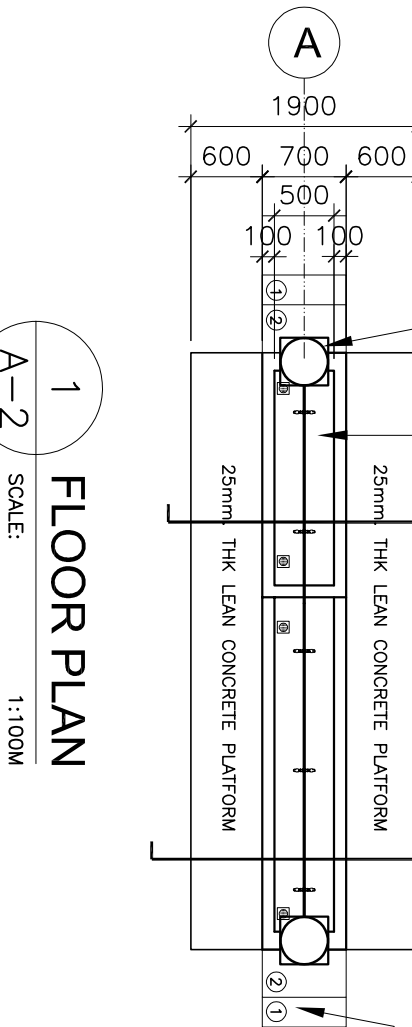
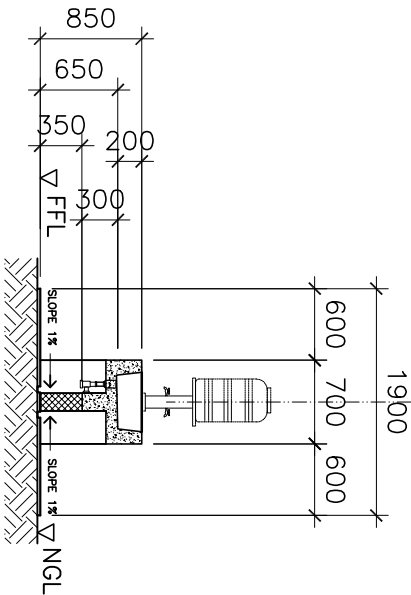
### 3 REAR ELEVATION

## RIGHT SIDE ELEVATION

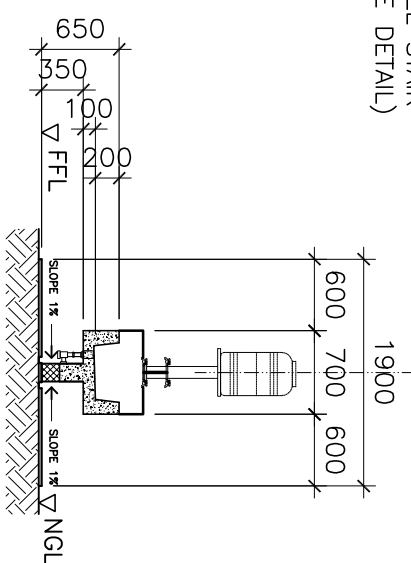
LEFT SIDE ELEVATION



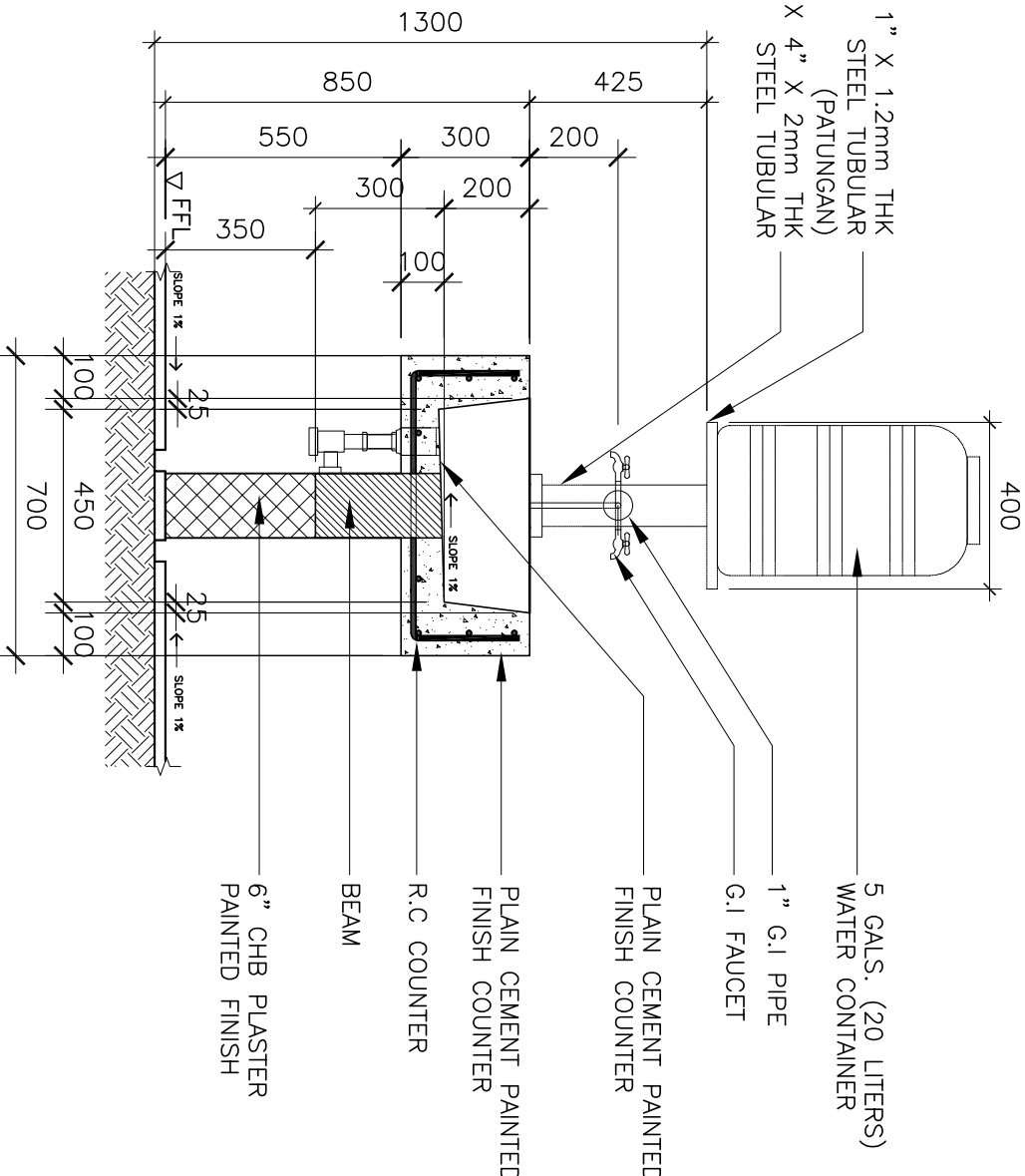
# CROSS SECTION 1



## CROSS SECTION 2



## 8 HANDWASHING COUNTER DETAIL



**HANDWASHING**  
**PLAIN CEMENT PAINTED FINISH**  
**(OPTION 2: VARIANT D)**  
**FOR SECONDARY**



LINE & GRADE

ARCHITECTURAL

STRUCTURAL

SANITARY

ELECTRICAL

MECHANICAL









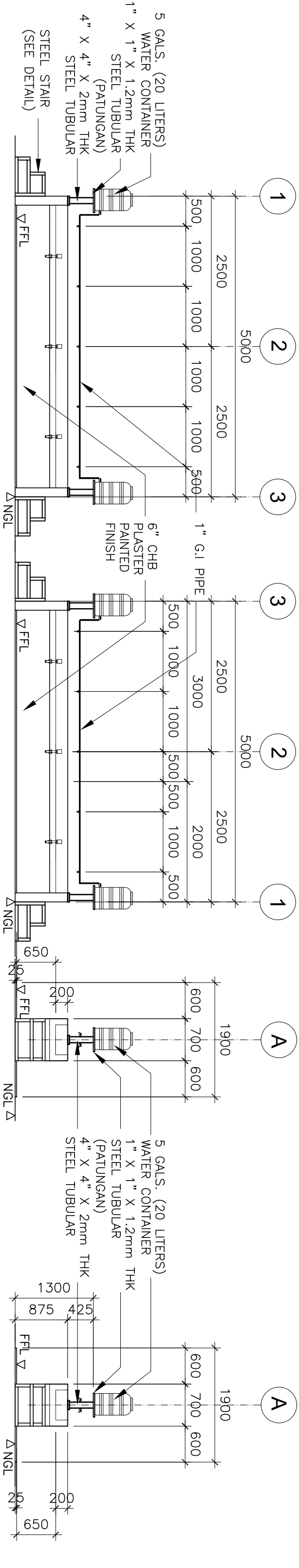
1

PERSPECTIVE

A-1

N T S

<div>REPUBLIC OF THE PHILIPPINES</div> <div><div></div><div>DEPARTMENT OF EDUCATION EDUCATION FACILITIES DIVISION MIRALCO AVENUE, PASIG CITY</div></div>		DRAWN BY : <div> JUNELISON P. CULLADO CDD OPERATOR EPD-DepEd</div>		ARCHITECT : <div> JET RAYMOND G. ALABASO ARCHITECT III EPD-DepEd</div>		RECOMMENDING APPROVAL : <div> LUIS G. PURISIMA, JR. ASST. CHIEF, EPD-AS DepEd</div>		RECOMMENDING APPROVAL : <div> ANNABELLE R. PANGAN CHIEF OFFICE OF THE CHIEF, EPD-AS</div>		APPROVED BY : <div> ALAN DEL B. PASCUA UNDERSECRETARY FOR ADMINISTRATION</div>		PROJECT TITLE : HANDWASHING PLAIN CEMENT PAINTED FINISH (OPTION 2: VARIANT D) FOR SECONDARY LOCATION :		PROJECT CODE:		OWNER : DEPARTMENT OF EDUCATION DepEd		SHEET NO: A-1 3	
												SHEET COMMENTS : - PERSPECTIVE							

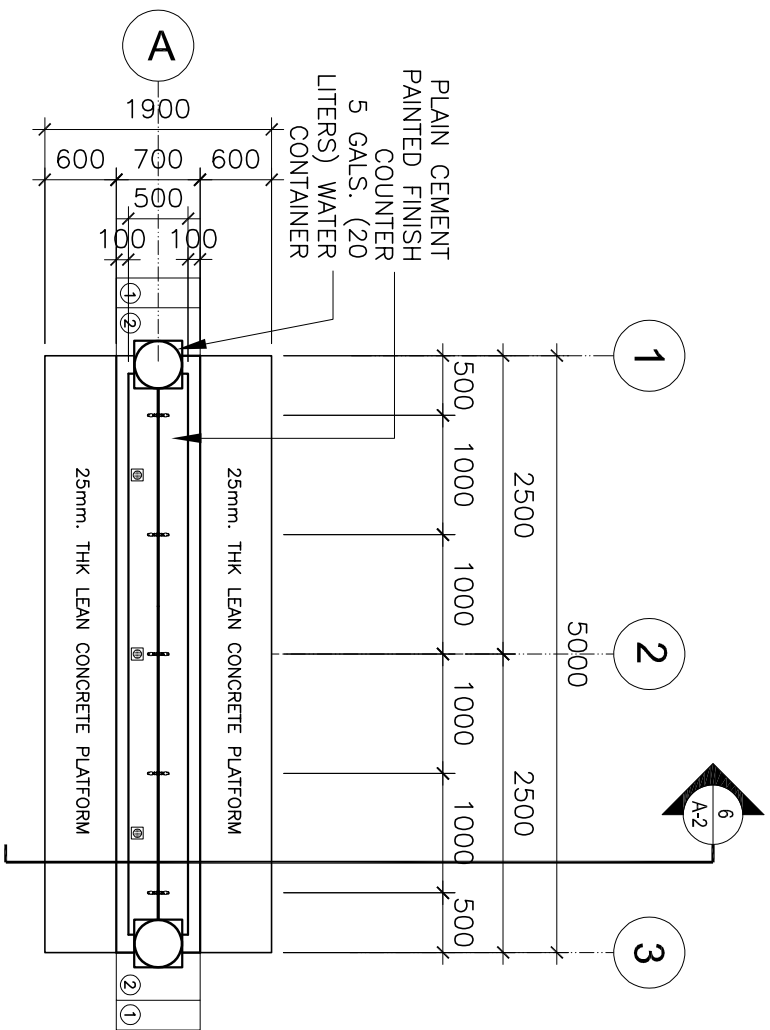


2 FRONT ELEVATION  
SCALE: 1:100M

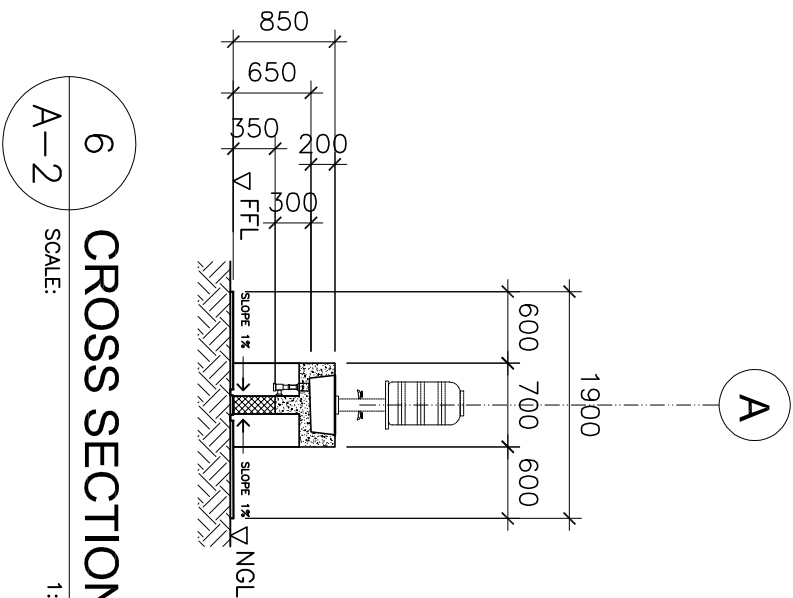
3 REAR ELEVATION  
SCALE: 1:100M

4 RIGHT SIDE ELEVATION  
SCALE: 1:100M

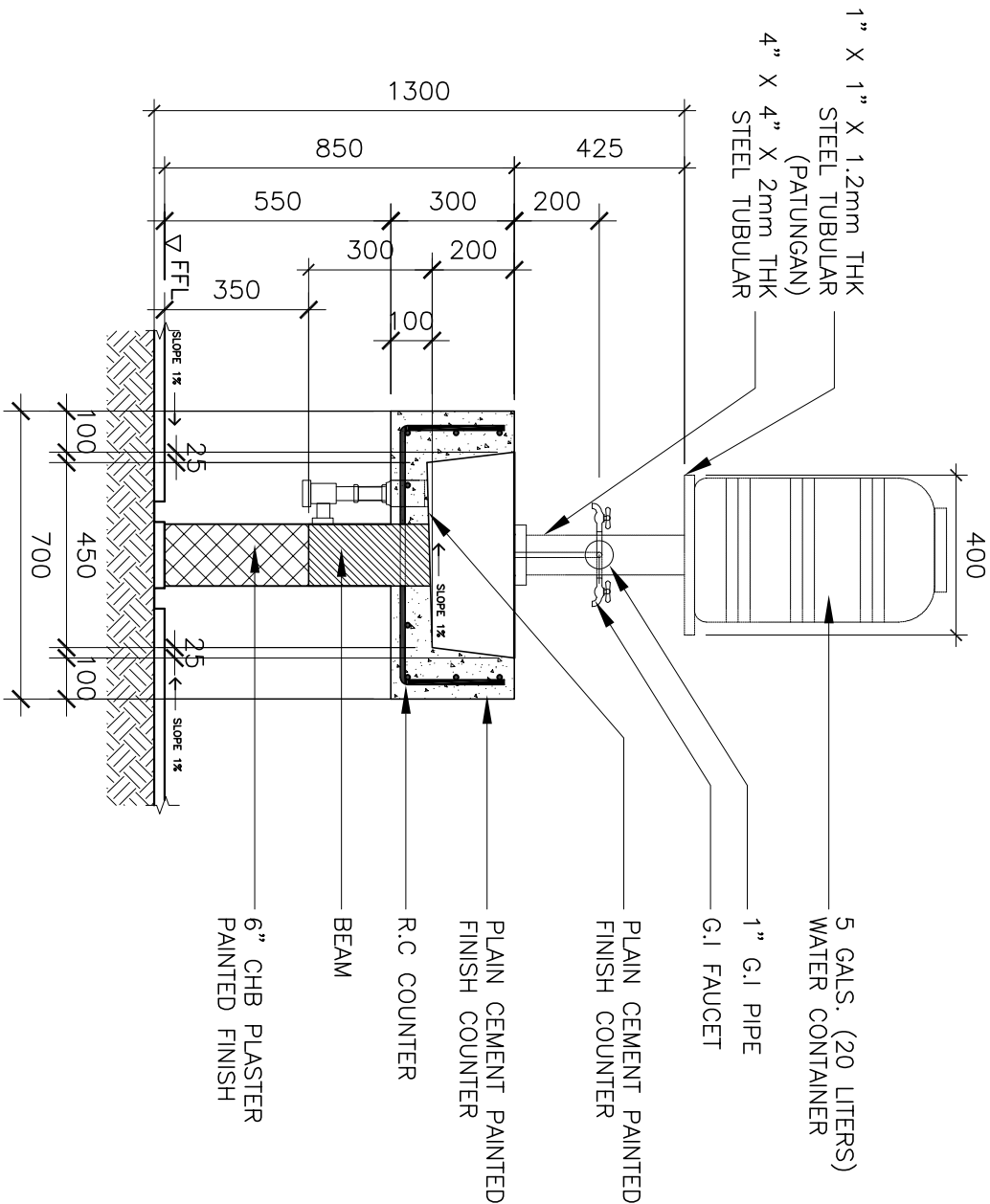
5 LEFT SIDE ELEVATION  
SCALE: 1:100M



1 FLOOR PLAN  
SCALE: 1:100M



6 CROSS SECTION 1  
SCALE: 1:100M



7 HANDWASHING COUNTER DETAIL  
SCALE: N.T.S